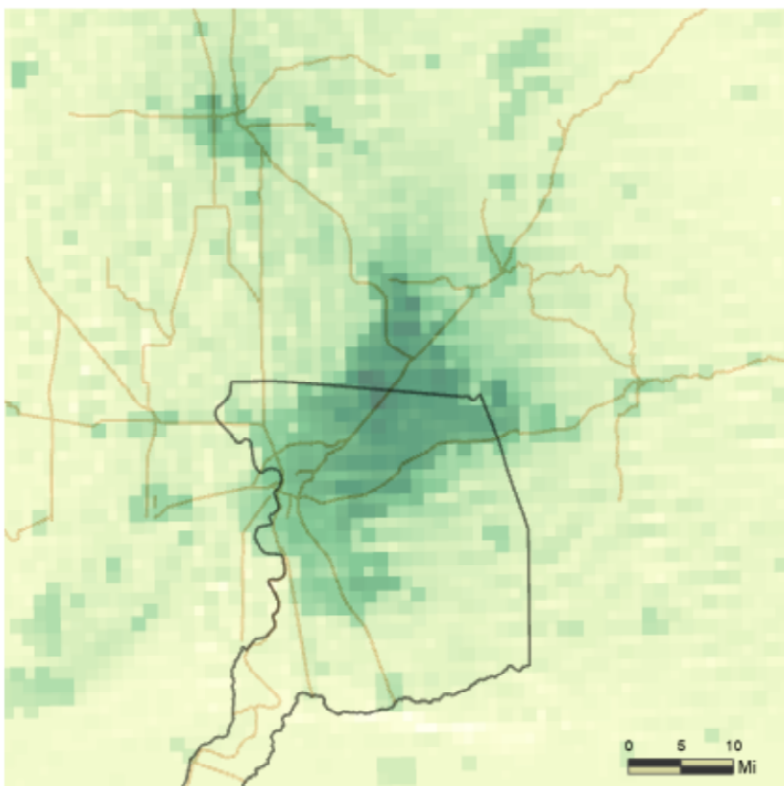
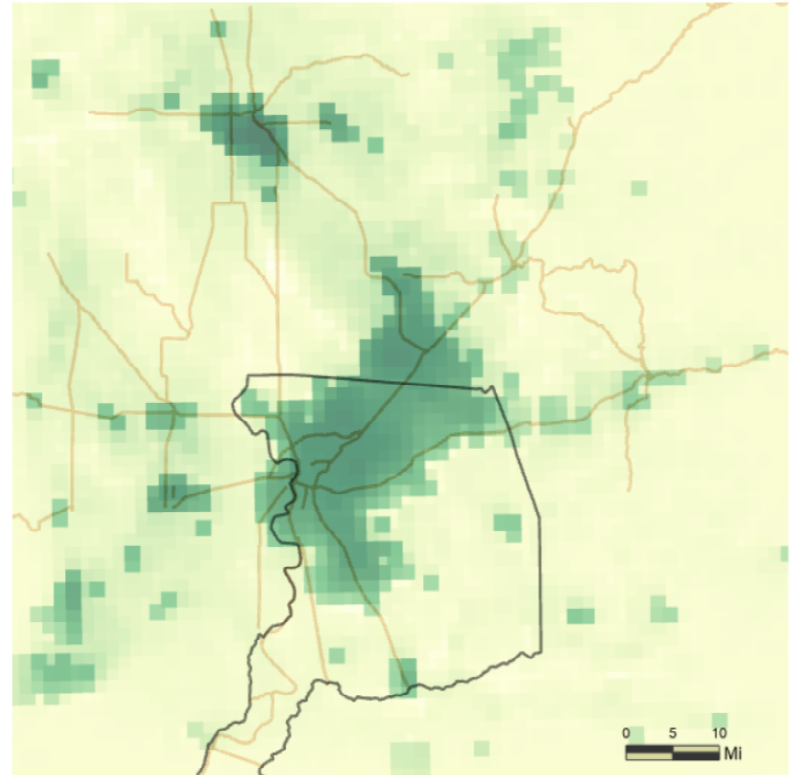
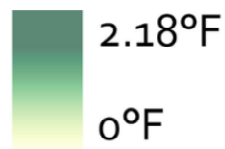


+12% CANOPY COVER

Increases in tree canopy produce a uniform cooling effect through urbanized areas.

Degrees of cooling at 6AM

Due to transpiration, vegetation can cool the air both during the day and at night. According to our models, trees have the most potential to cool during morning hours and all-day averages.



Degrees of cooling at 3PM

During peak sunlight hours, cool roofs and pavements provide the most amount of cooling, but vegetation can provide significant localized cooling.

